

Flandreau Santee Sioux Tribe Monthly Newsletter May 2020

Wozupi Wi (Moon of Planting) May - this when the dakota, lakota, nakota people start to plant their traditional foods.



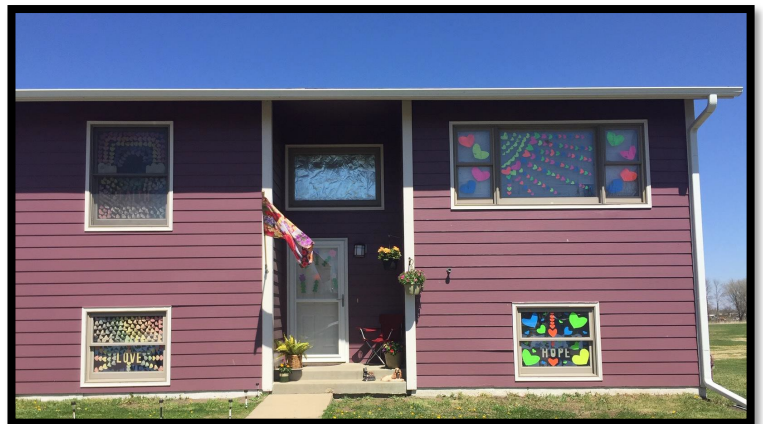
Spring Clean Up Winners



1st place Delson Long \$150 gift card to Tractor supply



2nd place Sunshine Blair
\$100 Dollar General gift card



3rd place Kevin Pederson Sr
\$50 1st American Mart card



Thank you to all the other housing renters who participated

Flandreau Santee Sioux Tribe Newsletter is a monthly publication by the

Flandreau Santee Sioux Tribe.

Digital photos or sending other original files is encouraged.

Deadline for submission of material is

5 work days before the 15th of each month

Flandreau Santee Sioux Tribe

Attn: Marcie Walker

P.O. Box 283

Flandreau, SD 57028

or Call: 997-3891 ext. 1251

marcie.walker@fsst.org

NOTICE OF DISCLAIMER:

In preparation of this newsletter, every effort has been made to offer the most current, correct, and clearly expressed information possible. Nevertheless, inadvertent errors in information may occur. In particular but without limiting anything here, the Flandreau Santee Sioux Tribe (FSST) and its employees disclaim any responsibility for typographical errors and accuracy of the information that may be contained in the Flandreau Santee Sioux Tribe's Newsletter. The FSST also reserves the right to make changes at any time without notice.

The information in this newsletter have been compiled by the FSST Newsletter staff from a variety of sources, and are subject to change without notice. The FSST makes no warranties or representations whatsoever regarding the quality, content, completeness, or adequacy of such information and data. In any situation where the official printed publications of the FSST differ from the text contained in this newsletter, the official printed documents take precedence.

If inaccurate or otherwise inappropriate information is brought to our attention, a reasonable effort will be made to print a correction in the next month newsletter. We reserve the right to omit submissions if it is felt that the content or subject matter is inappropriate.

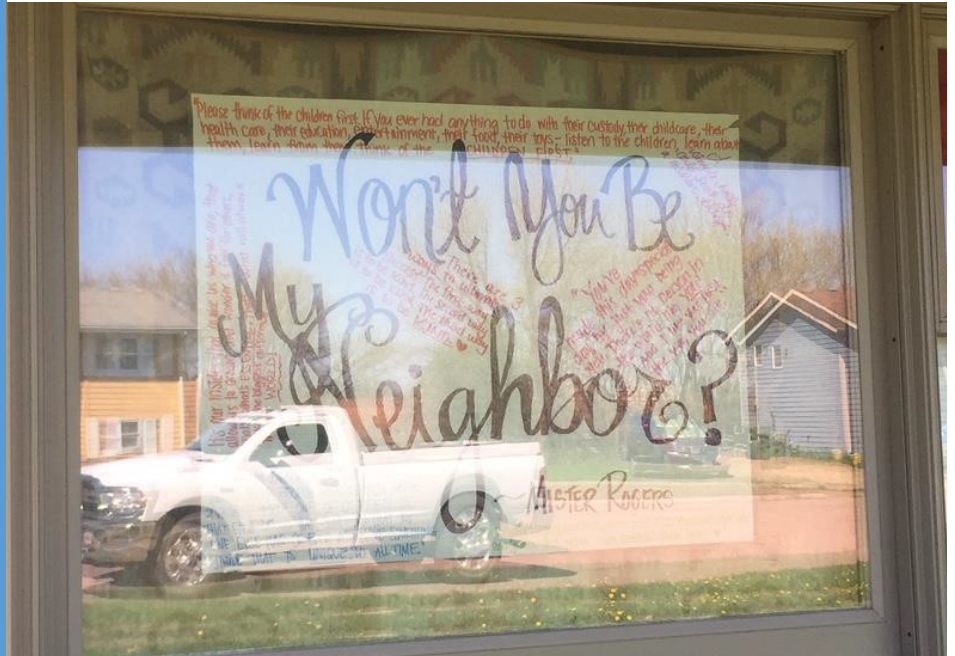
NEWSLETTER SUBMISSION

GUIDELINES:

All information submitted for newsletter must be received 5 (five) working days before the 15 of each month. We cannot guarantee inclusion of any submissions after that date in that month's newsletter. Submissions must be made in type-written (or computer generated) format. They can be submitted directly to Marcie Walker in hard-copy, on disk or via email at:

marcie.walker@fsst.org

The FSST reserves the right to edit submission for content and clarity when appropriate. Additionally, submissions not of a time sensitive nature may be delayed for next month newsletter



"WONT YOU BE MY NEIGHBOR?"

Sylvia Roy

\$30 gift card to Maynard's



Amanda Taylor

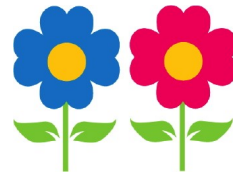
\$30 gift card to Maynard's



"THIS MOM GOT YOU"

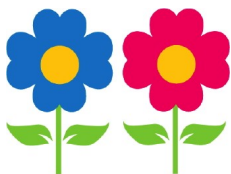
Betty Armstrong

\$30 gift card to Maynard's



Brock Nelson

\$30 gift card to Maynard's

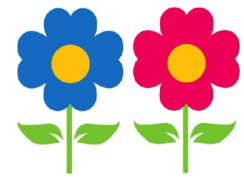


"LIFE IS WHAT YOU MAKE IT"

Dawn Serrano

\$30 gift card to Maynard's





**"STAY STRONG MITAKOYE
OYASIN FSST"**

Desiree Nelson

\$30 gift card to Maynard's

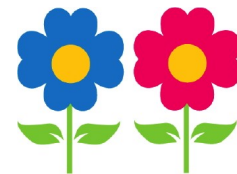


"#STAY SAFE"

"#DAKOTA STRONG"

Gayle Soward

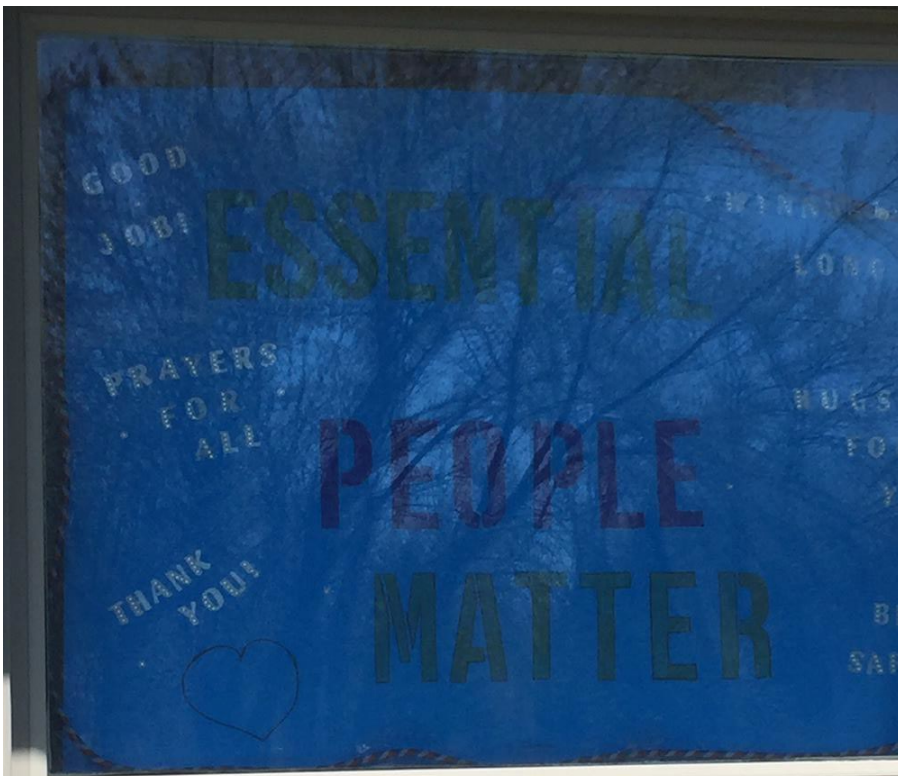
\$30 gift card to Maynard's



'ESSENTIAL PEOPLE MATTER'

Shannon Turner

\$30 gift card to Maynard's





Ummm..This is NOT social distancing lol!



Hi Ardie!!

Stay Safe



STAY STRONG



**Happy Birthday Stevie!
Love, mom & Family**



Class of

2020



Congratulations Graduates

CONGRATS GRADUATES! CONGRATS GRADUATES! CONGRATS GRADUATES!

CONGRATS GRADUATES!



Hunter
Wade



Hunter
Witte

CONGRATS GRADUATES!

CONGRATS GRADUATES! CONGRATS GRADUATES! CONGRATS GRADUATES!

CONGRATS GRADUATES! CONGRATS GRADUATES! CONGRATS GRADUATES!

CONGRATS GRADUATES!



Tayson
Alberts



David
Allen



Tristan
Bietz

CONGRATS GRADUATES!

CONGRATS GRADUATES! CONGRATS GRADUATES! CONGRATS GRADUATES!

CONGRATS GRADUATES! CONGRATS GRADUATES! CONGRATS GRADUATES!

CONGRATS GRADUATES!



Devon
Burgraff



Kenneth
Corcoran



Aaliyah
Dupris

CONGRATS GRADUATES!

CONGRATS GRADUATES! CONGRATS GRADUATES! CONGRATS GRADUATES!

CONGRATS GRADUATES! CONGRATS GRADUATES! CONGRATS GRADUATES!

CONGRATS GRADUATES!



Josie
Elverud



Wakinyanhotunwin
Flute Player



Jordyn
Hall

CONGRATS GRADUATES!

CONGRATS GRADUATES! CONGRATS GRADUATES! CONGRATS GRADUATES!

CONGRATS GRADUATES! CONGRATS GRADUATES! CONGRATS GRADUATES!

CONGRATS GRADUATES!



Tishara
Hardy



Kennedy
Headrick



Gabriel
Hobbie

CONGRATS GRADUATES!

CONGRATS GRADUATES! CONGRATS GRADUATES! CONGRATS GRADUATES!

CONGRATS GRADUATES! CONGRATS GRADUATES! CONGRATS GRADUATES!

CONGRATS GRADUATES!



Grace
Johanson



Mazzy
Johanson



Madison
Kontz

CONGRATS GRADUATES!

CONGRATS GRADUATES! CONGRATS GRADUATES! CONGRATS GRADUATES!

CONGRATS GRADUATES! CONGRATS GRADUATES! CONGRATS GRADUATES!

CONGRATS GRADUATES!



Ashley
Lange



Molly
Lloyd



Jevan
Moran

CONGRATS GRADUATES!

CONGRATS GRADUATES! CONGRATS GRADUATES! CONGRATS GRADUATES!

CONGRATS GRADUATES! CONGRATS GRADUATES! CONGRATS GRADUATES!

CONGRATS GRADUATES!



Destiny
Nelson



Sergio
Nieto-Beltran



Jose
Pacheco-Perdomo

CONGRATS GRADUATES!

CONGRATS GRADUATES! CONGRATS GRADUATES! CONGRATS GRADUATES!

CONGRATS GRADUATES! CONGRATS GRADUATES! CONGRATS GRADUATES!

CONGRATS GRADUATES!



Ian
Parra



Hannah
Parsley



Matthew
Pauley

CONGRATS GRADUATES!

CONGRATS GRADUATES! CONGRATS GRADUATES! CONGRATS GRADUATES!

CONGRATS GRADUATES! CONGRATS GRADUATES! CONGRATS GRADUATES!

CONGRATS GRADUATES!



Diego
Serrano



Taryn
St. Pierre



Chaz
Stephens

CONGRATS GRADUATES!

CONGRATS GRADUATES! CONGRATS GRADUATES! CONGRATS GRADUATES!

CONGRATS GRADUATES! CONGRATS GRADUATES! CONGRATS GRADUATES!

CONGRATS GRADUATES!



Tanner
Sundermeyer



Kendall-Patrick
Treetop

CONGRATS GRADUATES!

CONGRATS GRADUATES! CONGRATS GRADUATES! CONGRATS GRADUATES!

Flandreau Flower shop facebook drawing

Gayle Soward nominated Beverly Wakeman in Flandreau Flower shop Mother's day drawing. And won!!! Yay for Gayle ! Beverly had no clue what Gayle was up to!!

Congratulation Gayle and Beverly!!!

Beverly Wakeman is my inspiration! This Lovely Lady has more get up and go than anyone I know. So very grateful to have her in my life! Beverly is so thoughtful and caring! She's just a amazing woman! **#dakotastrong**



Flandreau Flower Shoppe
Gayle Soward → You won the outdoor hanging basket & Beverly Wakeman won the \$25 Shoppe gift card! Stop by anytime to pickup! Congrats!!



School keeps grab-and-go meals through June



The Flandreau school system will be providing sack breakfasts and lunches to youth through June.

The Flandreau School Board supported that option at a special meeting April 21. Starting in July, the Boys and Girls Club of Moody County is scheduled to then start providing those meals, said school board member Kari Burggraff.

An average of 240 young people pick up grab-and-go sacks outside the school each day, that includes lunch and the next day's breakfast, said Stacey VanBeek, finance officer. The numbers vary between 200 and 300 kids a day, she said.

The school has grant money from the state that pays Lunchtime Solutions for the meals. That cost is basically a wash for the school, and the district pays wages to a couple of employees for two hours a day to hand out the lunches between 11 a.m. and 1 p.m.

"We want to encourage people to keep using it so we can keep doing it," VanBeek said. Kids of all grade levels eat the lunches, she said. She understands how it helps families, especially if there are job losses or children having to be at home while their parents work.

"People sure seem thankful for it," she said.

The meals have changed from the first week of lunches in March, when children received a sandwich, fruit, vegetable and milk. Lunches last week included a grilled chicken sandwich, popcorn chicken and pizza, along with two types of sandwiches, for example. One of the breakfasts included an omelet. Instructions are included in each sack on how to heat the meal in a microwave or oven, and the school's menu is on the school website.

Meals are free to anyone between birth and age 18.

Entrance remodel

The school board tabled plans for a \$182,500 remodel the entrance to the high school, making it possible for staff in the office to directly see who is coming into the school through the front doors.

The change is needed to provide safer security for the building, school district administration and board members have said.

The board will take up the issue again at its May 11 meeting.

Several board members said that while the project is important, they are hesitant to spend money in uncertain times caused by the coronavirus pandemic. They would prefer to see where the district stands with money from the state next year.

"I just don't know if we should spend the money at this time," Burggraff said. "I'm not saying we don't need to keep our infrastructure up to date."

Board member Tammy Lunday echoed the sentiment. "I just want to be good stewards of the dollars."

Money for the project will come out of the district's capital outlay fund, which is intended to be spent on building improvements and technology, VanBeek said. A portion, 40 percent, of the fund can be moved to cover general fund expenditures, including teacher pay.

There is money in the account and based on the district's other needs, the project is fine to do now, she said. At the end of March, the account had \$1.2 million in it, and that doesn't include what it will get next year in taxes paid to the district.

The district accepted bids from three contractors with the low bid of \$182,500 going to Ronning Enterprises of Sioux Falls. Pulscher Brothers locally was the next lowest bidder at \$196,900.

Once board members looked more at the capital budget, they tended to favor doing the project but wanted to postpone a decision until the next meeting to get more information.

The contract calls for a start date of May 27.

The entrance to the school right now is a security issue because the office staff can't see where people go once they enter the building, the district has said. Visitors are asked to check in at the office but not all do.

"If it were purely cosmetic, I would be for putting it off and waiting, but the security factor is huge," said Kelly Kontz, board member.

The board approved the hiring of Wylie Scalise as the agriculture teacher and FFA adviser, replacing Jennifer Perryman, who resigned after one year.

The board also approved the retirement of Becki Landgren, middle school secretary.

Summer events "up in the air"



A company hired by the city recently finished installing a new playground structure in the park near Broad Avenue and Veterans Street. The playground replaced a former structure that was broken. It was paid for, in part, through a grant from South Dakota Land and Water Conservation Fund that paid \$18,000. The city paid a matching \$18,000. The city is asking that no one use the equipment until after the corona virus threat has passed.

Summer programs for Flandreau youth may be jeopardy this year as city officials decide whether activities could be held later in the summer and whether it is worth opening the city aquatic center at all.

Group activities, including baseball, are under review, said Jeff Pederson, city administrator. Programs are being designed, and instructors are being lined up, but nothing is certain. "As of right now, it's quite unsure whether or not we would be able to go forward with those programs," Pederson said. "June isn't looking good."

The aquatic center is expensive to get ready, if it can't open for most of the summer, he said. Typically, the pool opens in late May, after school is out.

A decision on the pool will need to be made soon to avoid unnecessary expenses, he said. "Time is passing by pretty quickly on that."

If the city is uncertain when the pool can open, it will be difficult to hire lifeguards and other staff because they will look for other jobs, Pederson said.

The issue will be on the next city agenda.

FLANDREAU SANTEE SIOUX TRIBE
CORONAVIRUS ISOLATION ASSISTANCE PROGRAM

The Flandreau Santee Sioux Tribe hereby develops the Coronavirus Isolation Assistance Program for individuals who are effected by Coronavirus. These funds are to be used only to provide specific relief to individuals and families that are effected by coronavirus. These funds can only be used for the following: housing expenses (rent, mortgage), utility payments, household necessities, prescription medicine and medical expenses, food, and any other items that are necessary during isolation. If someone has been directed by their medical provider to isolate and care for themselves at home, they may apply for up to two weeks at one time.

ELIGIBILITY:	<p>Individuals are eligible for this program if they:</p> <ol style="list-style-type: none"> 1. Reside in Moody County, South Dakota or work for the Flandreau Santee Sioux Tribe, and 2. Test positive for COVID-19, or who have someone in their household tests positive for coronavirus, or who have been directed to isolate by order of a medical professional. <p>***Please note that you do not need to be a member of the Flandreau Santee Sioux Tribe to apply for this program.</p>
SERVICES PROVIDED:	<ol style="list-style-type: none"> 1. \$500 prepaid VISA card to the individual. There will be only one payment made per household per week if necessary. 2. \$100 Hy-Vee gift card to the individual. There will be only one gift card provided per household per week.
PURCHASING ASSISTANCE:	<p>Efforts should be made by the individual to make payments online for necessary expenses, and the Tribe will attempt to assist in the collection and delivery of grocery items, if they are ordered online at the Hy-Vee in Brookings. Pickup can be coordinated through the FSST Social Services Department (605) 573-4218.</p>
APPLICATIONS:	<p>To apply for this program, the following must be submitted to FSST Social Services by e-mail at socialservices@fsst.org.</p> <ol style="list-style-type: none"> 1. Completed and Signed Flandreau Santee Sioux Tribe Coronavirus Relief Program Application. 2. A written and signed medical note from the medical provider who is caring for the COVID-19 patient with a directive to isolate.
DISCLOSURES:	<ul style="list-style-type: none"> - All applications will be considered as they are received. - This program is subject to available funding, and may be cancelled without notice by the Tribe. - Misuse of these funds and/or fraudulent applications will be prosecuted in accordance with applicable law. - No retroactive applications will be accepted. - Program participant is expected to comply with isolation direction from their medical provider. Failure to comply will cancel eligibility and support and may constitute fraud and any penalties related.
EFFECTIVE DATE:	<p>Approved by the FSST Executive Committee on May 12, 2020.</p>



APPLICATION FORM - FSST CORONAVIRUS ASSISTANCE PROGRAM

Please fill out this form completely. Incomplete forms will not be accepted.

Legal Name: _____			
Social Security Number (Only Used For IRS Purposes): _____			
Address: _____			
City, State, ZIP: _____			
Phone: _____			
Fax Number: _____			
E-Mail Address: _____			
Are you a member of the Flandreau Santee Sioux Tribe? Yes ___ No ___			
Are you a member of a different federally recognized Tribe? Yes ___ No ___			
If yes, which Tribe: _____			
Who lives in your household?			
Name	Age	Gender	Relationship
Have you tested positive for COVID-19? Yes ___ No ___			
Date of Positive Test _____			
Physician Name _____			
Physician Phone Number _____			
Testing Facility Name: _____			
Has someone in your household tested positive for COVID-19? Yes ___ No ___			
Date of Positive Test _____			
Physician Name _____			
Physician Phone Number _____			
Testing Facility Name: _____			
Did a Physician order that you remain isolated at home or a medical facility? Yes ___ No ___			
How long must you remain isolated? _____			
Do you want assistance in picking up groceries? Yes ___ No ___			
<p>SIGNATURE: I, the undersigned applicant, hereby submit that this form is true and accurate to the best of my knowledge. I further authorize the Flandreau Santee Sioux Tribe to validate this information, and consent to the use of any and all information provided, including the note from the medical provider.</p>			
Name (printed): _____			Date _____

Send this application and a written and signed medical note from the medical provider who is caring for the COVID-19 patient with a directive to isolate by e-mail to: socialservices@fsst.org. If you have questions regarding this form, please call (605) 573-4218. Your medical provider may fax their note to (877) 508-0413.



Glenn Alan Rederth

October 10, 1961 - April 22, 2020



Glenn Alan Rederth, Cante Wašte Wicašta “Good Hearted Man”, 58, of Flandreau, SD took the journey April 22, 2020 after losing his battle with health complications. Glenn was born October 10, 1961 in Flandreau, SD to Lloyd and Rosemary Donna (Rederth) Crow. He spent his younger childhood days in Canova, SD with his foster family, Mr. and Mrs. Duck.

Glenn’s teen years he lived in Flandreau with his mother Donna. Glenn worked summer jobs for the Flandreau Santee Sioux Tribe. He moved to California for nine years and during that time Glenn went to school for interior decorating/poem writing and received a degree in both.

He came back home and worked in various jobs at Pokémon and Winks, both in Madison, SD and did seasonal work. He worked at Royal River Casino and Hotel for many years during the 1990s and 2000’s in different departments including hotel house-keeping and food and bar. Glenn liked decorating homes, the Food Network Channel, Keno, playing dice, and music was a big part of his life.

He loved his daughter Sioux J. and loved to just sit and talk about anything and everything. Glenn’s favorite past time was scaring people. His humor and zest for life were a big asset for him. Glenn would give the shirt off his back if need be. The compassion in his heart was great for everyone who crossed his path.

Due to health reasons Glenn was not able to work and lived with his brother and sister in Flandreau. This last year he was a resident at the Alcester Care & Rehab Center.

Glenn is survived by his granddaughter Mavis and six siblings, Dana Red Earth, Becky Red Earth-Villeda, Robin Rederth, Lloyd Crow, Jr., Melodie Crow, all of Flandreau; and Darwin Crow, Sioux Falls. Glen is also survived by many aunts, uncles, cousins, nieces, and nephews.

He was preceded in death by his daughter Sioux Red Earth, brother Conrad, sister Brenda and his parents.

Graveside services will be held at First Presbyterian Cemetery, Flandreau.
www.skrochfc.com



Most likely after the 2020 census is complete, these numbers on entrance signs to Flandreau will be the same.

Moody County is slightly behind the state average when it comes to completing U.S. Census questionnaires for 2020.

But Flandreau is the largest participant in the county when it comes to residents who filled out their forms online and by mail. The town has had 53 percent of questionnaires completed and turned in, the majority of the filed at the Census website. The county as a whole has 51.5 percent of the forms returned.

South Dakota's participation so far is 54.3 percent. Residents have until Oct. 31 to respond on their own, a date moved back because of the COVID-19 virus, according to the census information online.

The census, which is required to be taken every 10 years by the federal government, helps determine where federal money goes, based on population.

Some examples of how federal money is distributed because of the census numbers can be seen with federal emergency management requirements and federal money that comes to the county for firefighting, said Marty Skroch, county human resources director and assistant to the commission.

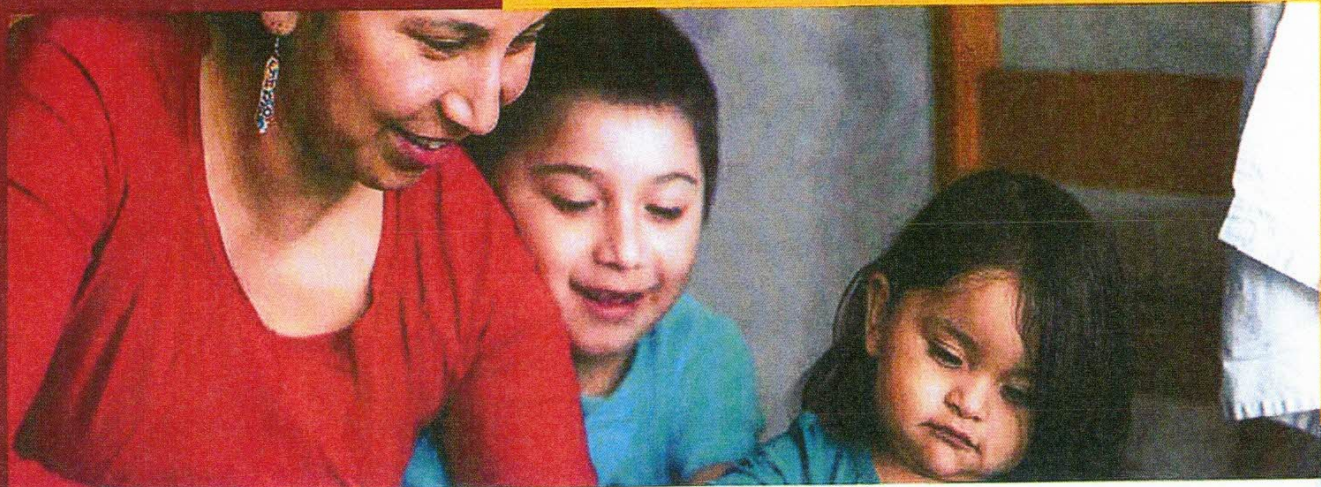
"It does trickle down," he said.

Other towns in the county have varying percentages of participation with a high of 46.6 percent Egan to a low of 15.8 percent in Trent. Colman residents have self-responded at a rate of 32.7 percent. Ward is not listed in the government data.

The self responses so far this year compare roughly to total self responses in 2010, for the most part.

That year, 59.3 percent turned in their Census information on their own in Moody County, including 63.4 percent in Flandreau.

Colman has a participation rate of 46.1 percent, while Egan had a 67.4 percent rate. Trent's self response among residents was in the single digits at 6.3 percent.



2020 Census Snapshot — American Indian/Alaska Native

What is the census?

Every 10 years, the United States counts everyone living in the country on April 1. Our tribes do not share enrollment numbers with the government, so it is important for all American Indians and Alaska Natives to participate in the 2020 Census.

What's in it for me?

The 2020 Census is an opportunity to provide a better future for our communities and future generations. By participating in the 2020 Census, you help provide an accurate count of American Indians and Alaska Natives. Your responses to the 2020 Census can help shape how billions of dollars in federal funds are distributed each year for programs and grants in our communities.

The 2020 Census is our count. Our responses matter. Regardless of age, nationality, ethnicity, or where we live, we all need to be counted.

Responding to the 2020 Census is:

> Easy

In early 2020, every household in the United States will receive a notice to complete the census online, by phone, or by mail.

> Safe

Your responses to the 2020 Census are confidential and protected by law. Personal information is never shared with any other government agencies or law enforcement, including federal, local, and tribal authorities.

> Important

The federal government and local American Indian and Alaska Native leaders and decision-makers will use 2020 Census data in a variety of ways that can benefit Native people and our communities.

2020CENSUS.GOV

D-OP-AI-EN-055

**Shape
our future
START HERE >**



Frequently Asked Questions

> Q. Who should complete the census questionnaire?

A. One person in the home should complete the questionnaire and include every person living there, including relatives, nonrelatives, babies, and children.

> Q. How do I fill out the race question correctly?

A. If you self-identify as American Indian or Alaska Native, you should check the American Indian or Alaska Native race box. You should then print the name of your enrolled or principal tribe in the write-in area.

> Q. What kind of assistance is available to help people complete the questionnaire?

A. Assistance responding to the 2020 Census will be available on 2020census.gov and via our toll-free phone number. Language guides, language glossaries, and language identification cards will be available in 59 non-English languages. Large-print guides to the questionnaire will also be available upon request, as well as telephone devices for hearing impaired. On 2020census.gov, video tutorials and how-to resources can help you complete your census form. Many communities, partners, and local organizations will also provide assistance.

> Q. How does the Census Bureau count people without a permanent residence?

A. Census Bureau employees work extensively to take in-person counts of people living in group housing, like college dormitories and shelters, as well as those experiencing homelessness or who have been displaced by natural disasters.

2020 Census Key Dates



January-April 2020

First census enumeration takes place in Toksook Bay, Alaska.



March 2020

Census notices are mailed or delivered to households.



March-May 2020

Census takers visit each household to update address lists and collect information on the questionnaire.



April 1, 2020

Census Day



May-July 2020

Census takers visit households that have not completed the questionnaire.



December 31, 2020

By law, the Census Bureau delivers population counts to the President for apportionment of congressional seats.



March 2021

By law, the Census Bureau completes delivery of redistricting data to states.

For more information, visit:

2020CENSUS.GOV

D-OP-AI-EN-055

**Shape
our future
START HERE >**





Sending smokes prayers to all.....



Dakota Layers doles out eggs



📷 Above, the Easter Bunny and Chick had help from Jett Ramsdell and Nora Ramsdell in delivering over 100 treat bags to the Zephier children, Zavier, age 6 holding Zaiden age 8 months and Akiah, age 3. They are the children of Zach and Alison Zephier of Flandreau.

Tours Flandreau with Easter Bunny & Chick delivering treats to kids

Flandreau-based Dakota Layers has donated thousands of dozens of eggs to feed hungry people in South Dakota this time of year.

The family-owned egg farm, for the fourth year, has partnered with South Dakota State University's men's and women's basketball teams to donate eggs to Feeding South Dakota based on each free throw made during the season. This year 441 free throws have turned into a donation of 540 dozen eggs, or 6,480 eggs.

The company also has pledged to donate 36,000 dozen, or 432,000 eggs, to help families in the Sioux Falls area through this week and to share with families near the Pierre and Rapid City distribution centers through Feeding South Dakota.

"We're so thankful to help fight hunger across the state, especially during these unprecedented times," said Jason Ramsdell, general manager for Dakota Layers.

The company also has sponsored events for children in Flandreau during the Easter Season. The first being their 5th annual coloring contest.

Then on Saturday, they brought the Easter Bunny and Chick to tour the town delivering via "social distancing" 100 treat bags to children. The remaining were given to the school district to hand out with the district's free meals.

**IT'S A NO BRAINER
IF YOU'VE BEEN
DIAGNOSED WITH
COVID-19
OR HAVE BEEN AROUND
SOMEONE WHO'S
BEEN DIAGNOSED**

**QUARANTINE!!
STAY HOME!!!!**

COVID-19 SHOPPING TIPS



✓ **WATCH WHAT YOU TOUCH**

Disinfect cart and basket handles

✓ **WASH YOUR HANDS**

Wash with soap for at least 20 seconds

✓ **SHARING IS CARING**

Stockpiling can mean someone may not be able to buy with they desperately need

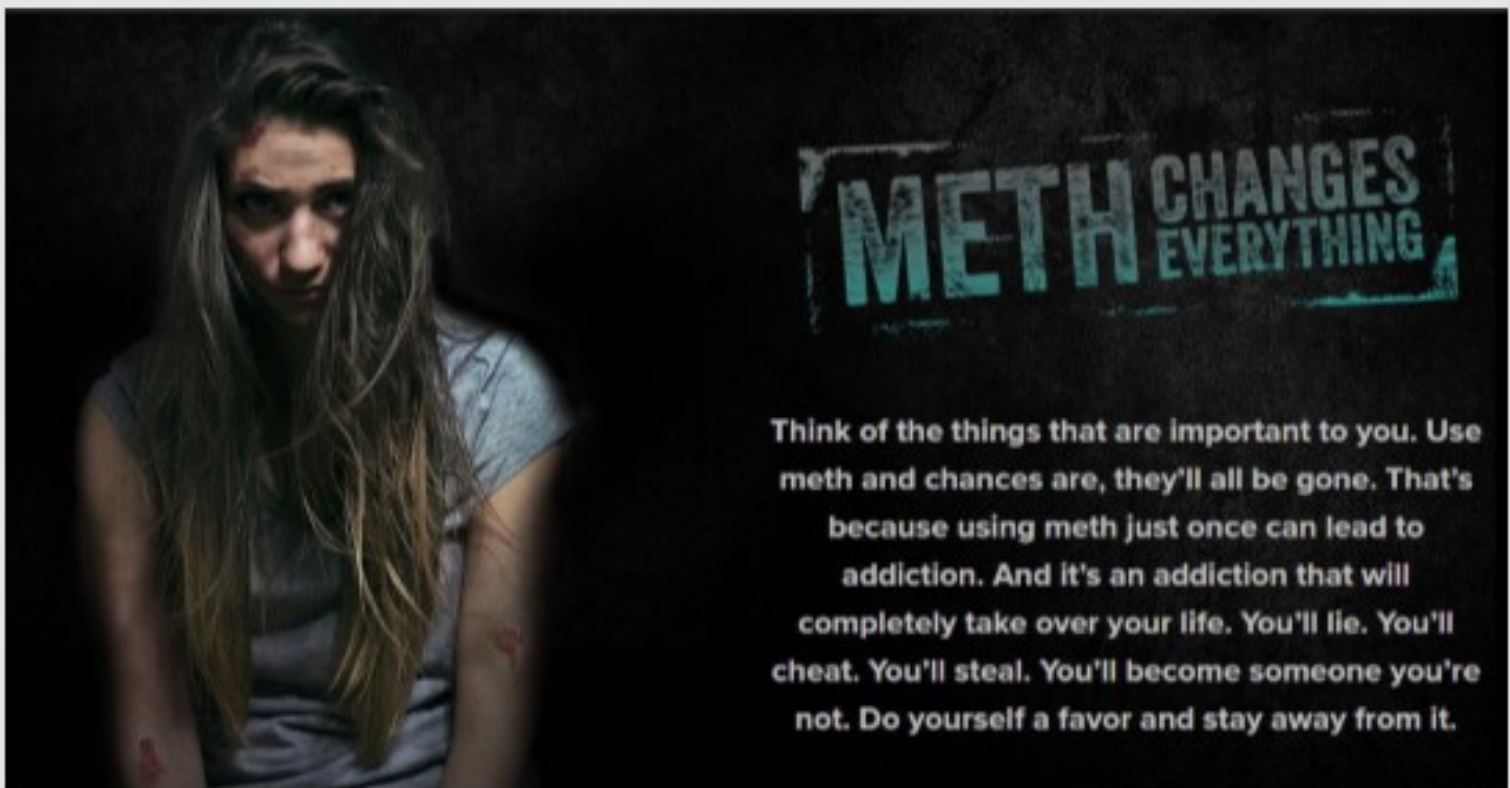
✓ **SOCIAL DISTANCING**

Keep a personal radius of 6 feet away from others, even in the checkout line.

✓ **LIMIT NONESSENTIAL OUTINGS**

Plan ahead to get enough groceries to last a week





Think of the things that are important to you. Use meth and chances are, they'll all be gone. That's because using meth just once can lead to addiction. And it's an addiction that will completely take over your life. You'll lie. You'll cheat. You'll steal. You'll become someone you're not. Do yourself a favor and stay away from it.

Knowing the signs of meth abuse might help you save someone's life.

Certain behavioral and physical changes are common among meth users. Signs of meth abuse include:

- Hyperactivity
- Drastic weight loss
- Dilated pupils
- Talkativeness
- Increased distractibility
- Tooth decay and loss of teeth
- Aggression
- Irritability
- Agitation
- Grandiose behavior
- Twitchiness
- Loss of interest in normal activities, such as food, water, sex, and sleep
- Getting "sketched out," or becoming agitated, nervous, moody, irritable, paranoid, and/or aggressive.
- Jumpy eyes
- Scratching, itching, or picking at skin
- Financial difficulties
- Not meeting financial obligations
- Absenteeism or tardiness at school or work
- Noticeable changes in behavior
- Cravings
- Social and interpersonal problems
- Impulsive behaviors
- Memory loss
- Bizarre and erratic behavior
- Repetitive behavior patterns that can last for hours, also called "tweaking" or "geeking."
- Sleep deprivation, resulting in hallucinations, delusions, extreme paranoia, or violence





Flandreau Santee Sioux Tribe

P.O. Box 283 Flandreau, SD 57028

Ph. 605-997-3891

Fax 605-997-3878

www.santeesioux.com

To keep our Members & Employees safe from the spread of COVID-19

- GWA paper checks will be mailed out eff. 4/15/20 until further notice.
Direct deposit members remain the same as usual.

**REMEMBER There will be no checks to be picked in GWA office up on
1st or 15th until further notice**

- May 1 Confirmation of Residency (COR) will be waived until Nov 1
- All loan programs (member credit, home improvement, energy asst., ERC, pay advances, quilts) are shut down until further notice
- All loan pmts (members credit, home improvement, energy asst. ERC, quilts) will be deferred until further notice. If you would like to continue your pmts as usual call finance @ 997-3891 Ext. 1250 (Shantel) or 1221 (Angie)
- Any updating Information will be mailed and posted on Tribal Office front door.

**Stay home & be safe if you have to venture out
We can get through this together!**

Executive Committee

4/6/2020

Effective

April 15

**General Welfare
checks will be
mailed until
further notice**

**There will be NO checks at the
Tribal Office**



1st Presbyterian Church 1871